

TITAN X1300 - X1350

FI - I - F

NEW



automotive service equipment

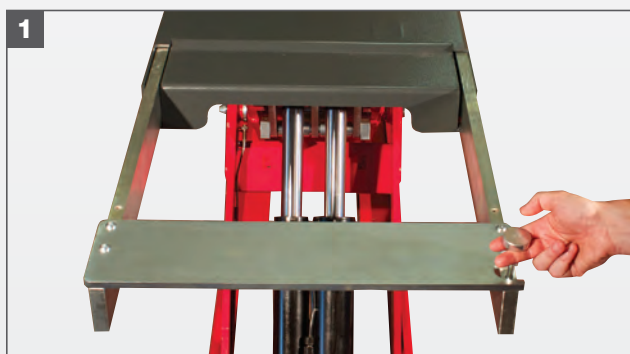
SOLLEVATORI SOTTOCOCCA a forbice a pedane indipendenti e a basso profilo

LOW PROFILE INDEPENDENT runway underbody scissor lifts

1. PEDANA CON ESTENSIONE A CASSETTO RUNWAY WITH SLIDE-OUT EXTENSION

Pedana con estensione a cassetto (solo per TITAN X1300 - X1350) per una precisa regolazione della lunghezza.

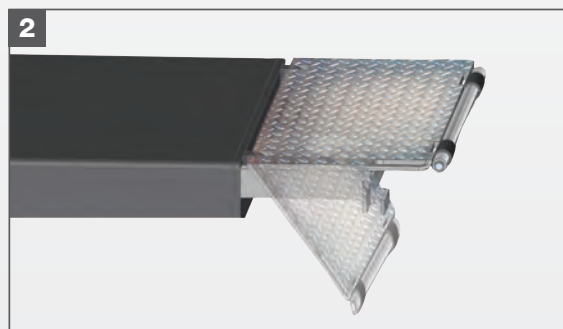
Runway with slide-out extension (only for TITAN X1300 - X1350) for precise length adjustment.



2. PEDANA CON FLAPS APPESI RUNWAY WITH SUSPENDED FLAPS

Pedane con flaps appesi (solo per TITAN X1300 F - X1350 F), che fungono anche da rampe per la salita del veicolo.

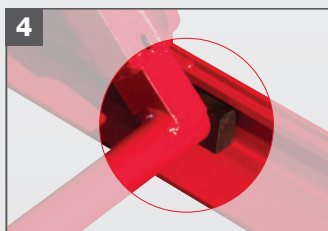
Runways with suspended flaps (only for TITAN X1300 F - X1350 F) which also act as vehicle access ramps.



3-4. PATTINI - SLIDERS

Pedana e base con pattini di scorrimento di grandi dimensioni ed autolubrificanti.

Runway and base with generously sized self-lubricating sliders.



5. PEDANE A LIVELLAMENTO IDRAULICO HYDRAULIC RUNWAY LEVELLING SYSTEM

Sistema di livellamento idraulico delle due pedane, con doppio circuito master/slave (due cilindri per pedana), che consente la massima sicurezza di lavoro senza l'impiego di cremagliere meccaniche. Il rifasamento tra le pedane avviene automaticamente ad ogni ciclo.

Hydraulic runway levelling system with dual master/slave circuit (two cylinders per runway) for total safety without the need for mechanical racks. Runway realignment performed automatically at each cycle.



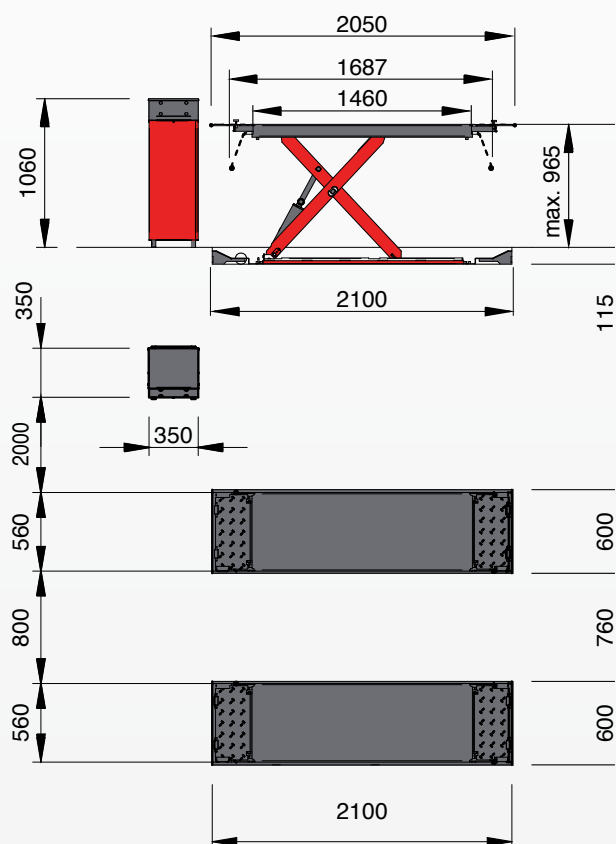
6. STABILITÀ GARANTITA - SUPERIOR STABILITY

La stabilità in fase di sollevamento dei veicoli con TITAN X1300 - X1350 è garantita dalla struttura di importanti dimensioni.

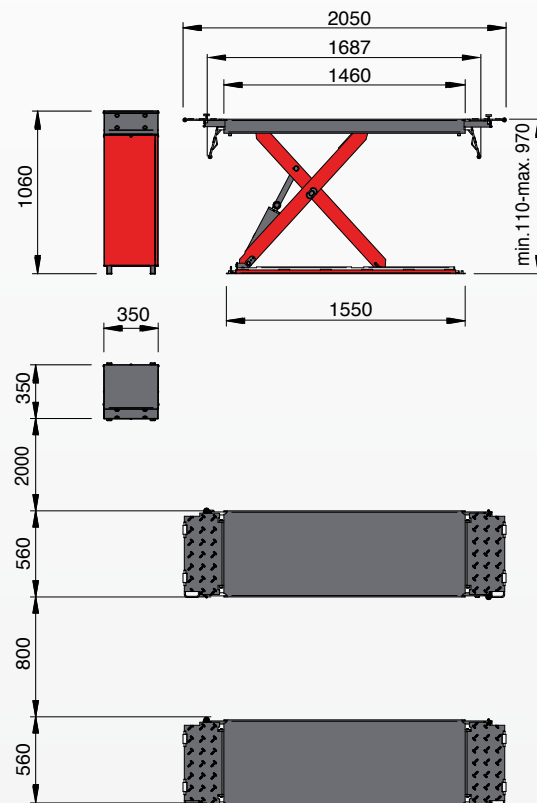
TITAN X1300 - X1350 lifts feature large section structural elements for superior stability when lifting vehicles.



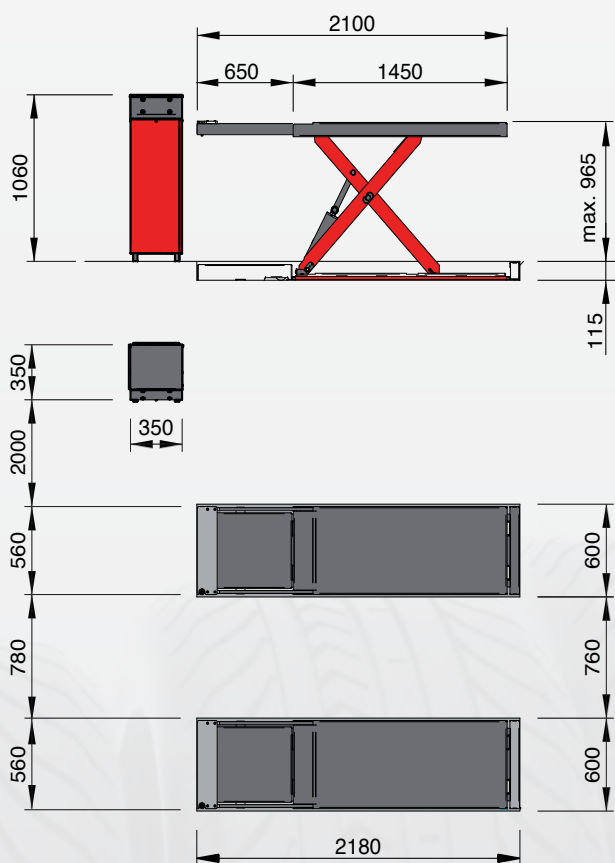
TITAN X 1300-1350 FI



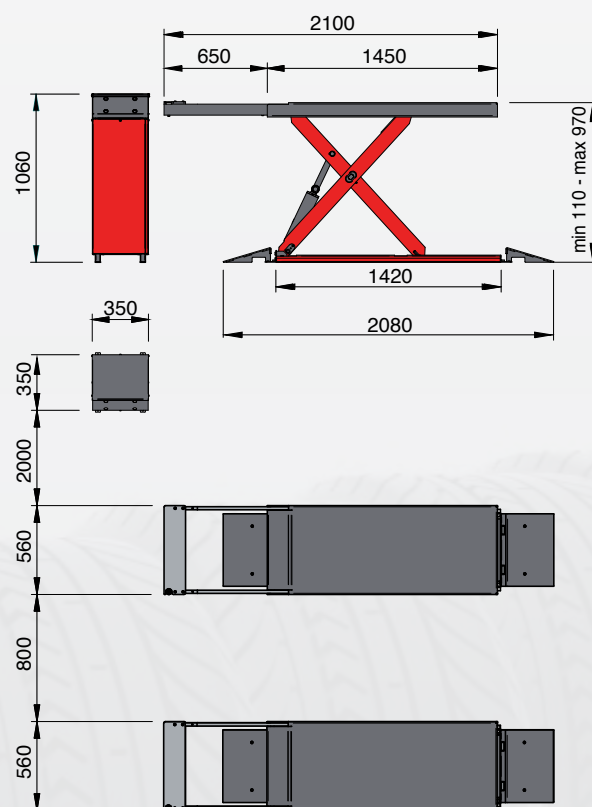
TITAN X 1300-1350 F



TITAN X 1300-1350 I



TITAN X 1300-1350



Dati tecnici Technical data

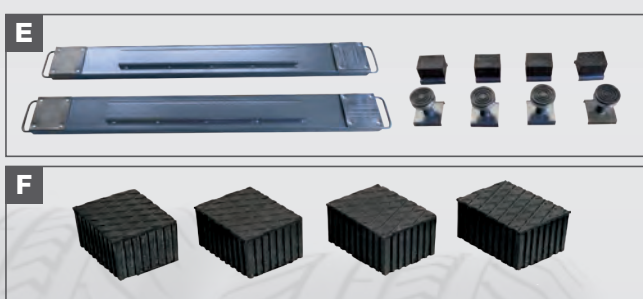
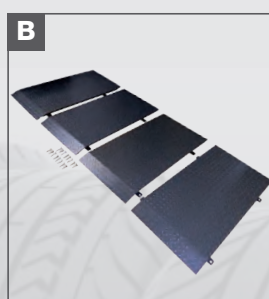
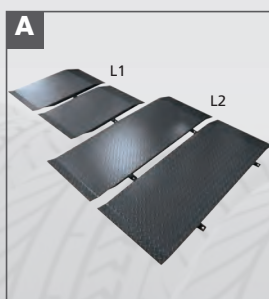
TITAN	X1300			X1350		
	FI	I	F	I	F	FI
Portata max - <i>Max load</i>	3000 kg			3500 kg		
Potenza motore - <i>Motor power</i>	3 kW					
Alimentazione - <i>Power supply</i>	230-400V 3ph 50-60Hz 230V 1ph 50Hz					

Versioni disponibili Available versions

TITAN	X1300			X1350		
	FI	I	F	I	F	FI
Pedane con flaps - Runways with flaps	✓		✓		✓	✓
Pedane con estensione - Runways with extensions		✓		✓	✓	

Accessori raccomandati Recommended accessories

TITAN	X1300			X1350		
	FI	I	F	I	F	FI
A. Set rampe lunghe per versione a pavimento <i>Set of long ramps for the floor version L1 = 800 mm - L2 = 1300 mm</i>			✓		✓	
B. Set rampe lunghe per versione a pavimento <i>Set of long ramps for the floor version L = 1000 mm</i>			✓		✓	
C. Prolunghe, tubi e cavi, ponte-centralina 1m <i>Extensions for pipes and cables, lift-control unit 1m</i>	✓	✓	✓	✓	✓	✓
D. Prolunghe, tubi e cavi, ponte-centralina 2m <i>Extensions for pipes and cables, lift-control unit 2m</i>	✓	✓	✓	✓	✓	✓
E. Coppia traverse per fuoristrada <i>Pair of beams for all-terrain vehicles</i>	✓	✓	✓	✓	✓	✓
F. Set di quattro tamponi da 80 mm <i>Kit of 4 rubber blocks height 80 mm</i>	✓	✓	✓	✓	✓	✓



Per maggiori informazioni consultare il catalogo accessori / For more information, please consult the accessories catalogue



www.facebook.com/MONDOLFOFERROofficial



<http://www.youtube.com/user/MondolfoFerro>